



# Regulatory Roundup

---

Weekly Webinar for Long-Term Care Professionals

---

 [IHCA.org/regulatory-roundup](https://ihca.org/regulatory-roundup)

## PRESENTERS

**Lori Davenport**

Indiana Health Care Association

**Team Members from**

Indiana Department of Health

---

September 5, 2024



# Today's Agenda

 [IHCA.org/regulatory-roundup](https://www.ihca.org/regulatory-roundup)

- Upcoming Education – Katie
  - Alzheimer's Disease & Dementia Care Certification course (live online), Sept 17:  
<https://www.ihca.org/events/alzheimers-disease-and-dementia-care-seminar-november-online/>
  - Study of Abuse & Neglect IJ deficiencies & POCs (webinar), Sept. 11:  
<https://ihcaincal.users.membersuite.com/events/886b4d99-0078-c21c-1ba1-0b46f58bff57/details>
- Qsource Update – CMS Referrals for COVID-19 Outbreaks, Vaccination Referrals, CMS National Priorities
- CPR, RSV, VBP – Lori Davenport

QSource CMS QIO  
Teresa Hostettler Lead QI Advisor

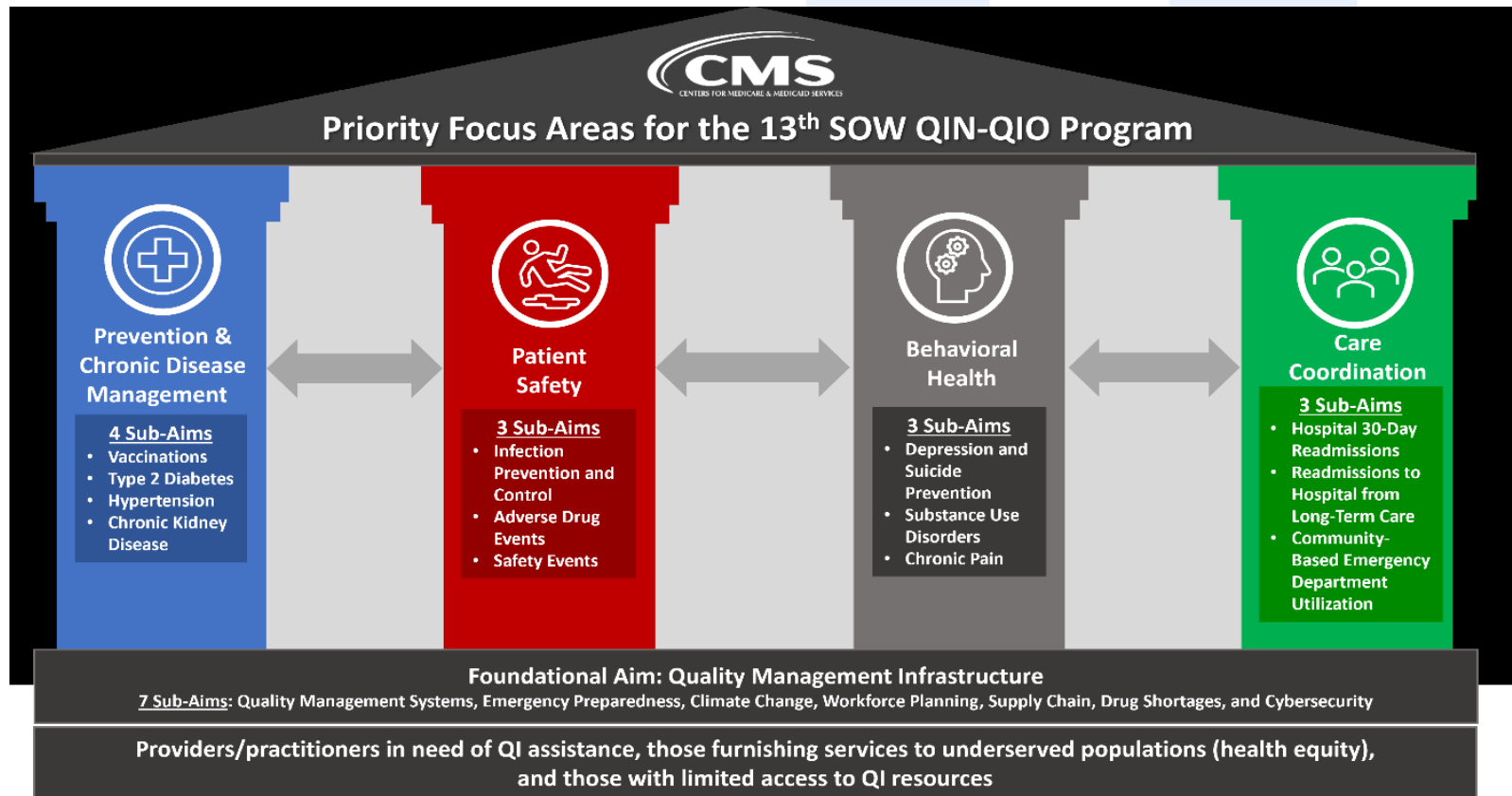
# CMS Referrals for covid out breaks

- *Received Weekly from CMS*
- *What to expect and the process*
- *What QSource is seeing during those visits*

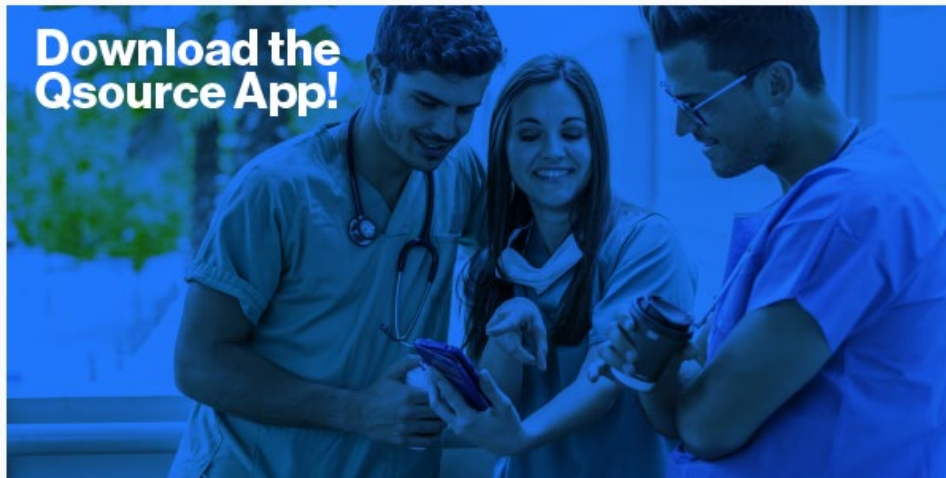
# CMS Vaccination Referrals

- Received weekly
- What to expected during the outreach call ,

# CMS National Priorities in the Next Five Year



## Download the Qsource App!



### The free Qsource mobile app is here!

By downloading the app, you will have immediate access to Qsource clinical resources, such as the CMS care pathways, both infection prevention and survey readiness tools, back-to-basic vignettes, podcasts, webinars, and helpful links at your fingertips. Please share this app with all your team.

Below are links to download the app for Android and iOS devices:

[Apple App Store](#)

[Google Play Store](#)

Resources will continue to be added regularly. Should you have any questions, please feel free to contact Teresa Hostettler at 812-381-1581 or [thostettler@qsource.org](mailto:thostettler@qsource.org).

This material was prepared by Qsource, a Network of Quality Improvement and Innovation Contractors under contract with the Centers for Medicare & Medicaid Services (CMS), an agency of the U.S. Department of Health and Human Services (HHS). Views expressed in this document do not necessarily reflect the official views or policy of CMS or HHS, and any reference to a specific product or entity herein does not constitute endorsement of that product or entity by CMS or HHS. 24.QIO1.06.036



# Thank you !

- Teresa Hostettler
- Lead QI Advisor  
Cell 8123811581
- [thostettler@qsource.org](mailto:thostettler@qsource.org)



# TB Certification



- Question: Are nurses that administer and read Mantoux tests required to be certified in Indiana?
- Answer: There are no statutes in the Indiana Code that address tuberculin skin test (TST) training or certification. However, untrained personnel cannot perform any medical or nursing task and still be following professional practice acts, performance standards, and the various facility licensure requirements.
- Health Facilities Licensing and Operational Standards – 410 IAC 16.2-3.1-14(t) states “a tuberculin skin test ... administered by persons having documentation of training from a department-approved program.

# TB Certification Question

- 410 IAC 16.2-3.1-14(t) does not state anything about being certified and/or it does not require training in any specific program.
  - Certification is an option
  - Training and competency to perform any medical or nursing task is required

# RSV – Flu and COVID-19

- Older adults in US are hospitalized and 6,000 to 10,000 die due to RSV infection.
- RSV can lead to lung infections, pneumonia, and worsening of other conditions such as asthma, CHF and COPD
- CDC recommends RSV vaccine if you are aged 75 or older, or if you are aged 60 to 74 with risk factor for severe RSV disease – including living in a LTC facility.

# RSV Vaccine

- The RSV vaccine is not an annual vaccine
- If you received the RSV vaccine last year – you do not need to get it again this year.
- You can get the vaccine anytime, but best time to consider getting if you have not already is the late summer and early fall.

# Symptoms of RSV

- People infected with RSV usually show symptoms within 4 to 6 days after getting exposed and infected.
- Symptoms usually appear in stages and not all at once.
  - Runny nose
  - Decrease in appetite
  - Coughing
  - Sneezing
  - Fever
  - Wheezing

# RSV Diagnosis and Treatment

- Antiviral treatment is not recommended for RSV
- Many providers do not test for RSV
- The CDC recommends to consider testing for RSV when residents with acute respiratory illness test negative for both influenza and COVID-19
- The CDC [viral respiratory pathogens toolkit](#) is a great resource for handling all three common respiratory viruses.

# Toolkit – Resource

- <https://www.cdc.gov/long-term-care-facilities/media/pdfs/Viral-Respiratory-Pathogens-Toolkit-508.pdf>

# CDC Webinar Respiratory Virus Season Updates for LTC

Title: 2024-2025 Respiratory Virus Season Updates for Long Term  
Care Providers

Date and Time: Monday, September 16, 2024, 1:00 PM to 2:00 PM Eastern Time (US and  
Canada)

Registration Information: [Register Here](#)



# The Center of Excellence Releases New September Education Events

## September Upcoming Education Events:

- September 5, 2024 – Question, Persuade, Refer (QPR) – Suicide Prevention Training  
2 – 3:30 pm EST
- September 10, 2024 – Changing the Narrative of Suicide by Addressing Suicidal Behaviors in Nursing Facilities  
2 – 3 pm EST
- September 19, 2024 – Understand the Science of Addiction and Recovery  
2 – 3 pm EST
- September 20, 2024 – Managing Substance Use Disorders (SUD) in Nursing Facilities Office Hours  
1 – 1:30 pm EST
- September 25, 2024 – CARES Serious Mental Illness (SMI) Office Hours  
2:30 – 3pm EST
- September 27, 2024 – Mental Health First Aid (MHFA)  
11 am – 4:30 pm EST

# VBP Measures Change 10-1

- Four additional CMS skilled nursing facility value-based purchasing measures take effect October 1, 2024
- These measures will determine Medicare Part A rates beginning October 1, 2026.
- There are four measures already in place
- SNF VBP Essentials is a course available to members and nonmembers on ahcancal ED
- Non-member \$80.00
- Member \$40.00

# Eight Measures

- Hospital Readmissions
- Healthcare Acquired Infection Hospitalizations
- Long-stay Hospitalizations
- Discharge to Community
- Discharge Function Score
- Total Nurse Turnover
- Total Nurse Hours Per Resident Day
- Long-stay Falls with Major Injury

# Q & A

Next Regulatory Roundup

September 19, 2024

12 noon – 1:00 pm